

Kansas Assessment Program

# Test Coordinator Training

May 20, 2025



# Welcome KAP Test Coordinators!

---



## Trainers for today's webinar:

**ATS** 

Katherine Kocen  
Drew Jarrett

**ATLAS**

Aletra Johnson

**KSDE**

Lee Jones (ACT)  
Cary Rogers (DLM)  
Julie Ewing  
Chelsea Pelfrey

# Agenda Topics

---



- KAP updates
  - Performance Level Descriptors overview
  - KSDE BOE Presentations
- KELPA updates
  - Report availability
- Kite® Technology updates
  - Parent Portal reminders
- Dynamic Learning Maps® (DLM®) updates
  - DLM score reports
  - DLM dates for 2025-2026
- ACT information
  - PreACT 8/9 Ordering Changes

# 2024-25 Test Coordinator Training Webinars



All webinars are conducted online via Zoom. A link to the webinar recordings, a PDF of the slide deck, and any additional resources can be found on the KAP website's [DTC Training page](#).

## 2024-25 Webinar Dates

August 20, 2024

January 21, 2025

September 17, 2024

February 18, 2025

October 15, 2024

March 11, 2025

November 19, 2024

April 15, 2025

December 17, 2024

May 20, 2025

# 2nd Grade Reading & KELPA

---



- Student score reports are available in the Kite Educator Portal!

# KAP Updates

---



Kansas Assessment Program

# Summer Timeline



May	
9	Assessment Window closed for full-time virtual students testing remotely.
20	DTC/BTC Virtual Training Webinar at 1pm
June	
9	KAP Standard Setting.
17	DLM Reports Available
July	
7	AMOSS Participation Data Check Window Opens. Closes on July 23

# 2015-24 State Assessment Performance Level Descriptors



- A student at Level 1 shows a **limited** ability to understand and use the English language arts (mathematics, science) skills and knowledge needed for postsecondary readiness.
- A student at Level 2 shows a **basic** ability to understand and use the English language arts (mathematics, science) skills and knowledge needed for postsecondary readiness.
- A student at Level 3 shows an **effective** ability to understand and use the English language arts (mathematics, science) skills and knowledge needed for postsecondary readiness.
- A student at Level 4 shows an **excellent** ability to understand and use the English language arts (mathematics, science) skills and knowledge needed for postsecondary readiness.



# 2025 Approved State Assessment Performance Level Descriptors



- A student at Level 1 shows a **limited** ability to demonstrate their knowledge and skills of (third, fourth, fifth, etc.) grade (ELA, Math, Science) standards.
- A student at Level 2 shows a **basic** ability to demonstrate their knowledge and skills of (third, fourth, fifth, etc.) grade (ELA, Math, Science) standards.
- A student at Level 3 shows a **proficient** ability to demonstrate their knowledge and skills of (third, fourth, fifth, etc.) grade (ELA, Math, Science) standards.
- A student at Level 4 shows an **advanced** ability to demonstrate their knowledge and skills of (third, fourth, fifth, etc.) grade (ELA, Math, Science) standards.

# Assessment Timeline

---



- June 9-13 – Standard Setting by Kansas Educators
- July 8 – KS BOE Standard Setting Results Presentation
- August 8 – KS BOE Vote on *Cut Scores* for Performance Levels
- Approximately September 1 – scores released to teachers, buildings, and districts. Scores in Parent Portal the following week.

# State Board Assessment Presentations



## March 2024

[State Assessment Development and Analysis](#) Beth Fultz, Director, Career Standards and Assessment services will be introducing. [Dr. Kingston, Director, KU Achievement and Assessment Institute](#)

Start time: 2:00:16

## September 2024

[Preview of Kansas Assessment Program \(KAP\) enhanced and refreshed instructional mini tests, interim and summative assessments and reports.](#) Beth Fultz, Director, KSDE Career, Standards and Assessment will introduce.

Start time: 5:55:44

## November 2024

[Standards Alignment Toolkits: Professional Learning and Technical Assistance Opportunities](#)

Start time: 6:16:55

## December 2024

[Formative Assessments: What are they and why are they an important part of a balanced assessment system?](#)

Start time: 6:10:04

# State Board Assessment Presentations



## January 2025

[Kansas Content Standards and Assessment Development](#) *Matt Copeland, Associate Director Susan Martin, Director at Assessment Technology Solutions at the Assessment and Achievement Institute at the University of Kansas*

Start time: 5:29:30

## February 2025

[Virtual Tour of KITE: The Kansas State Assessment Platform](#) *Matt Copeland, Associate Director Susan Martin, Director at Assessment Technology Solutions at the Assessment and Achievement Institute at the University of Kansas*

Start time: 3:38:30

## March 2025

[State Assessments: The Role of a Technical Advisory Committee Presenter](#) – *Cara Cahalan Laitusis, Senior Associate at the Center for Assessment*

Start time: 3:39:30

## April 2025

[State Assessments: Presentation of New Proposed Performance Level Descriptors](#) *Dan Gruman, KAAC Chair* Start time: 1:28:00

# State Board Assessment Presentations

---



May 2025

Standard Setting Methodology with Dr. Karla Egan

Start Time: 4:30:47

# District Test Coordinator Responsibilities



- Before you leave for the summer:
  - Deactivate staff who are leaving your district
- Changing DTCs for next year? Email [chelsea.pelfrey@ksde.gov](mailto:chelsea.pelfrey@ksde.gov) as soon as you know the replacement.
- Security and Ethics Training – Required annually.

# Regional Test Coordinator Trainings 2025-2026



- September 16 – Bishop Professional Learning Center: Topeka
- September 17 – Bishop Professional Learning Center: Topeka
- October 3 – Maize Performing Arts and Aquatic Center
- October 21 – SW Plains Regional Service Center: Sublette
- October 22 – NW Kansas Educational Service Center: Oakley
- October 30 – Fort Scott Community College
- November 20 – Bishop Professional Learning Center: Topeka

\*\*\*2 more trainings TBD

# Remote Test Coordinator Trainings 2025-2026

---



- NEW Required Virtual Training for districts who will have remote testers Spring 2026
- Starting in October with Dr. Robyn Kelso and Chelsea Pelfrey
- Dates will be released soon!



# *AMOSS Check Your Data*

---



- Check Your Data
  - July 7- July 23, 2025
  - KSDE Authenticated Web Application
    - AMOSS

# Questions?

Please use the chat feature in Zoom to ask any relevant questions or clarifications.

# KELPA Updates

---



# KELPA

Kansas English Language Proficiency Assessment

# KELPA Screener



- Reminder:
  - Add State Student Identifier (SSID) to KELPA Screener students
    - Connects Screener Student to TEST Enrollment Record
    - Retains KELPA Screener proficiency report associated with the SSID
  - Two ways to add the SSID
    - Manually: Settings > Screener Student > View Student > Edit
    - Upload/Link Student: Settings > Screener Student > Upload/Link Student > Upload updated KELPA Screener Student file

# KELPA Screener



- KELPA Screen for next academic year:
  - The "Screen student for next academic year" check box is now available
    - Use this check box if you are screening a student for the following school year
    - Settings > Screener Students > Add Student

**Screener Enrollment Details**

DISTRICT:\*

D1001 - Sunflower x ▾

SCHOOL:\*

S1001 - Cottonwood School x ▾

GRADE:\*

Select ▾

EDUCATOR IDENTIFIER (For Scoring):\*

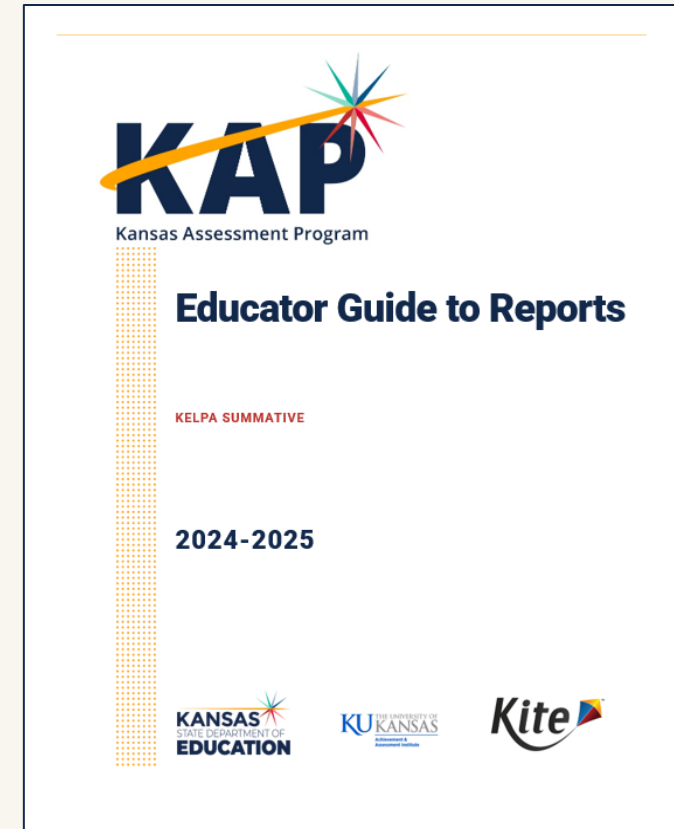
demo.educator@email.com

☐ Screen student for next academic year

# KELPA Reports



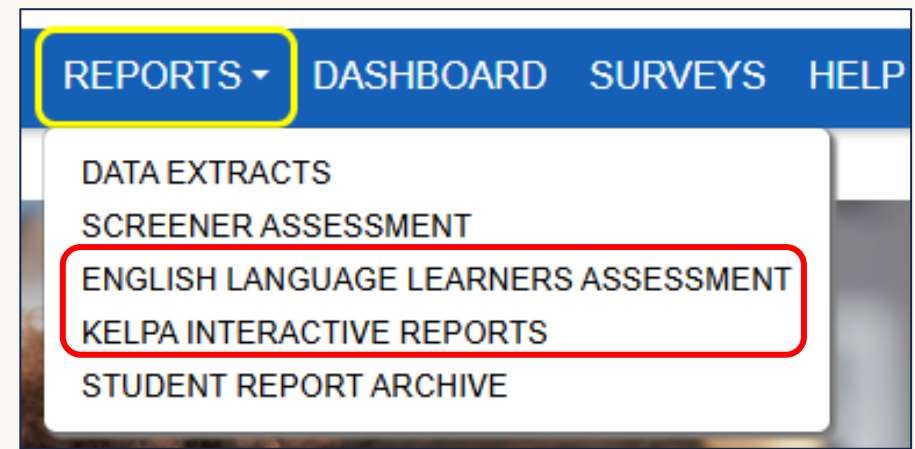
- KELPA Score reports are available in Kite Educator Portal
- KELPA Educator Guide to Reports - **New!**
  - KELPA Score Overview
  - Individual Student Report
  - School and District Reports
  - Interactive Reports
  - Parent Guide



# KELPA Reports – Cont.



- Individual Student Report (ISR)
  - Reports > English Language Learners Assessment > Student (Individual) / Student (Bundled)
- School and District Summary
  - Reports > English Language Learners Assessment > School Summary/District Summary
- KELPA Interactive Reports – **New!**
  - Reports > KELPA Interactive Reports
    - Overall Proficiency
    - Domain Performance
    - Individual Student



# Questions?

Please use the chat feature in Zoom to ask any relevant questions or clarifications.



# Kite Technology Updates

---



# Available Instructional Mini Tests



Grades	ELA	Math	Science	TOTAL
Grade 3	50	30 (+1)	20 (+2)	100
Grade 4	61 (+12)	35 (+8)	17	113
Grade 5	58 (+2)	39 (+6)	14 (+2)	111
Grade 6	65 (+9)	38 (+11)	n/a	103
Grade 7	61 (+3)	41 (+3)	n/a	102
Grade 8	52 (+2)	28 (+16)	n/a	80
Grade 10	45	24 (+3)	n/a	69
Grade band 6 - 8	n/a	n/a	88 (+14)	88
Grade band 9 -12	n/a	n/a	19	19
<b>TOTAL</b>	<b>392</b>	<b>235</b>	<b>158</b>	<b>785</b>

# Parent Portal



- Districts control access
- Upload Parent email and SSID to create the parent student connection in EP
  - Settings > Parents > Upload Parent tab or Add Parent tab
  - Upload: select Standard or Append
  - [KAP Test Coordinator Manual - Appendix G](#)

Parent Upload: Parent Portal Checkout District

This is a **Full District upload**. Select an option to proceed:

**Standard:** Existing parent student relationships for the entire district will be deleted and replaced with the newly uploaded data.

**Append:** New parent student relationships in the uploaded file will be added to the existing data. Duplicates of existing data will be ignored.

For partial upload, please select a school.

# Parent Portal – Cont.



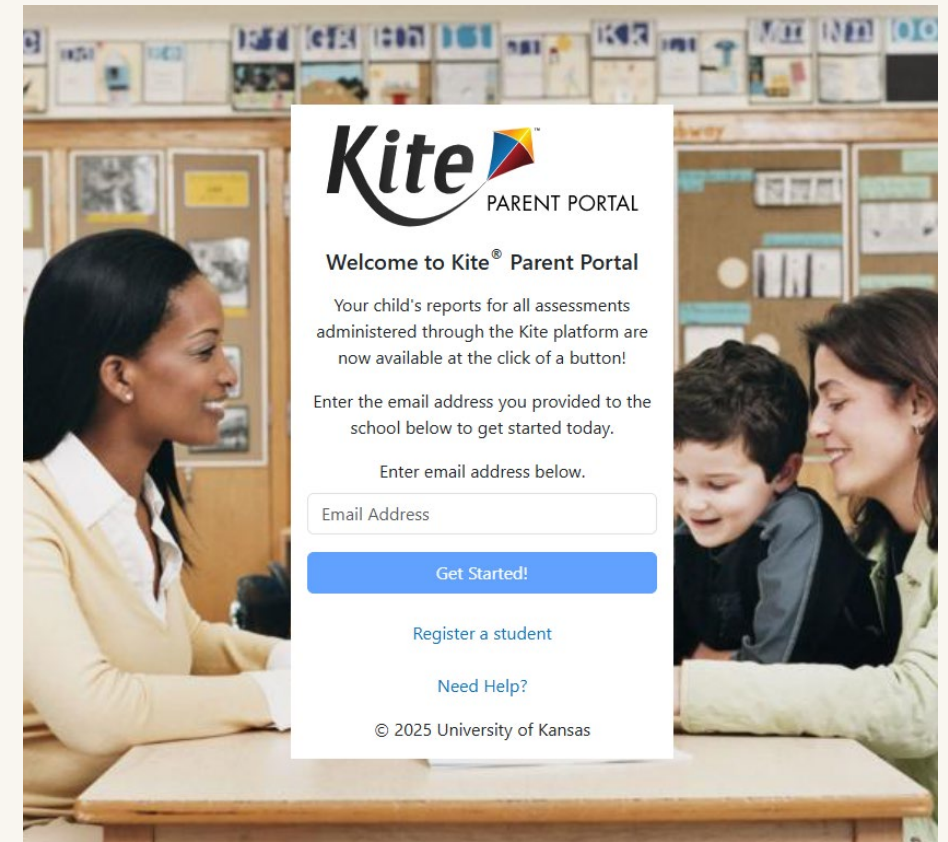
- Download Parents data extract before July 18th
  - Retain data to be edited and then re-uploaded in the Fall to give parents access to KAP Summative Reports
  - Reports > Data Extracts > Student Information tab > Parent > New File

<div>Student Information   Test Administration and Monitoring   Data Management</div>				
<b>Data Extracts</b>				
<b>Note:</b> Data extracts may include <b>Personally Identifiable Information (PII)</b> , take appropriate precaution to <b>protect</b> saved files.				
Extract	Description	Requested	File	Action
Current Enrollment	Current enrollment information for active students.			New File
PNP Setting Counts	Student PNP setting counts by organization.			New File
PNP Settings (Abridged)	Personal Needs and Preferences (PNP) settings by student.			New File
Parents	Parent details for active parent student relation.			New File
Roster	Student assignment by educator and subject.			New File
Student Login Usernames/Passwords	Student login usernames and passwords by assessment program and organization.			New File

# Parent Portal – Cont.



- Parents Portal access
  - Website: [parentportal.kiteaai.org](https://parentportal.kiteaai.org)
  - Parents login with registered email address and access code sent to registered email address
- Reports available for all Kite assessments
  - Interim from 2024 – 2025 school year, KELPA, and Grade 2 Reading reports
  - Historic reports
  - **Reminder**: Summative reports will not be available until Fall 2025



# Kite Student Portal

---







- No New Installations Needed, BUT
  - Chromebook
    - Google Admin Console configuration needed for version 138 (July 2025)
  - Windows (PC)
    - Configuration update may be needed if you are upgrading from Windows 10 to Windows 11.



Details included in updated SP Installation Guides, available late summer!

# Announcements – KAP Website & EP



**Families**

**Educators & Test Administrators**

**Technology Coordinators**

### Relevant Resources

- Assessments Overview Calendar (pdf) 
- Available ELA Instructional Mini Tests by Grade (pdf) 
- Available Math Instructional Mini Tests by Grade (pdf) 
- Available Science Instructional Mini Tests by Grade (pdf) 
- KAP Instructional Mini Test Guide (pdf) 
- KAP Interim Test Administrator Manual (pdf) 
- Kite Practice Test Guide (pdf) 

### Announcements

#### Additional Grade 6-8 Science Instructional Mini Tests Available

November 12, 2024

In the grade band 6-8 there are 8 additional Science Instructional Mini Tests that have been added to Kite Educator Portal. These Science Mini Test are in the following...

[Read more](#)

#### Science Instructional Mini Tests Available - Two grade bands

November 6, 2024

In the grade band 6-8 there are now 14 Science Instructional Mini Tests are available in Kite Educator Portal.

An additional 10 high school level Science Mini Tests...

[Read more](#)

SETTINGS ▾MANAGE TESTS ▾INTERIM ▾REPORTS ▾DASHBOARDSURVEYSHELP

ANNOUNCEMENTS

Additional Grade 6-8 Science Instructional Mini Tests Available	<a href="#">Read More</a>	11/12/2024 ▲
Braille Grade 7 Math Interactive Reporting Error	<a href="#">Read More</a>	11/07/2024
Manuals Updated with KAP Report Information	<a href="#">Read More</a>	11/06/2024 ▼

# EP Annual Maintenance

---



- July 24th - 25th Kite Educator Portal will be unavailable for annual system updates



# Kite Service Desk Contact Info



## Contact Methods



[kap-support@ku.edu](mailto:kap-support@ku.edu)



855-277-9752



Live Chat in Educator Portal

## Hours of Operation

7:00 AM – 5:00 PM CT Monday – Friday

**Extended Hours:** starting March 10, Open from 6:00 AM – 6:00 PM

Closed Monday, May 26 (Memorial Day)

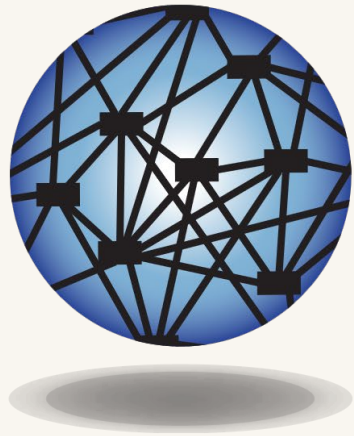


# Questions?

Please use the chat feature in Zoom to ask any relevant questions or clarifications.

# DLM Updates

---



**DYNAMIC<sup>®</sup>**  
LEARNING MAPS

# DLM Score Reports

---



- DLM score reports will be available to districts beginning on Tuesday June 17th.

# DLM Dates



DLM Dates	Date Open	Date Closed
Required Training	August 5, 2025	April 24, 2026
Fall Test Window	September 8, 2025	December 19, 2025
Spring Test Window	February 3, 2026	April 24, 2026

# Questions?

Please use the chat feature in Zoom to ask any relevant questions or clarifications.

# ACT Information

---



**ACT<sup>®</sup>**

# ACT and WorkKeys Spring 2025

---



- Scoring is in final stages for both WorkKeys and ACT.
- Most scores are already posted in Online Reporting for both assessments.
- Mailing of reports that are sent to schools started last week.
- Reporting for ACT will be final no later than June 20.
- Reporting for WorkKeys will be final no later than July 2.



# Looking Ahead to 2025-26

---



- PreACT 8/9 Ordering Update
  - CCRIS will no longer be used to order for the state-paid PreACT 8/9. Ordering will now be done through the new ACT Now platform.
  - If you order incorrectly, ACT will not be able to “fix” the invoicing and you will receive a bill.
  - Action: Wait until you receive instructions and dates for the PreACT 8/9 ordering.
- Watch for additional information this spring and summer from ACT and the KSDE test coordinators listserv about what's new for 2025-26 for ACT, WorkKeys and PreACT 8/9.

# Questions?

Please use the chat feature in Zoom to ask any relevant questions or clarifications.

# Session Wrap Up



A PDF of the slides and a recording of this webinar will be posted on [DTC Virtual Training page](#) each Friday following the webinar.

Have a great summer!

# Contact Information

- **Kite Service Desk**

☎ (855) 277-9752

✉ [kap-support@ku.edu](mailto:kap-support@ku.edu)

- **DLM Service Desk**

☎ (855) 277-9751

✉ [dlm-support@ku.edu](mailto:dlm-support@ku.edu)

- **KAP Assessments**

Chelsea Pelfrey

☎ (785) 296-0040

✉ [Chelsea.Pelfrey@ksde.gov](mailto:Chelsea.Pelfrey@ksde.gov)

- **DLM**

Cary Rogers

☎ (785) 296-0916

✉ [Cary.Rogers@ksde.gov](mailto:Cary.Rogers@ksde.gov)

- **ACT**

Lee Jones

☎ (785) 250-3760

✉ [Lee.Jones@ksde.gov](mailto:Lee.Jones@ksde.gov)