



Kansas Assessment Program

# Test Coordinator Training

June 11, 2024

# Welcome KAP Test Coordinators!

---



## Trainers for today's webinar:

### ATS

Susan Martin

Lisa Braun

Mitch Montague

Drew Jarrett

### ATLAS

Aletra Johnson

### KSDE

Cary Rogers (DLM)

Lee Jones (ACT)

Julie Ewing

# Agenda Topics

---



- KAP
- KELPA Screener and Summative
- Kite<sup>®</sup> Technology
- Dynamic Learning Maps<sup>®</sup> (DLM<sup>®</sup>)
- ACT

# 2023-24 Test Coordinator Training Webinars



All webinars are conducted online via Zoom. Additional information, including links, recordings, and additional resources, can be found on the [KAP website](#).

Webinar Dates	
August 8, 2023 ✓	January 9, 2024 ✓
September 12, 2023 ✓	February 13, 2024 ✓
October 10, 2023 ✓	March 5, 2024 ✓
November 14, 2023 ✓	April 9, 2024 ✓
December 12, 2023 ✓	May 14, 2024 ✓
	June 11, 2024 ✓

# KAP Updates

---



Kansas Assessment Program

# Summer Timeline



Summer Timeline		
June	11	DTC/BTC Virtual Training Webinar @ 1:00 p.m.
	18	DLM reports available.
July		
July	8-19*	<i>Tentative</i> Dates to check assessment data in KSDE Authenticated Web Application-AMOSS.

# Assessment Data in Kite

---



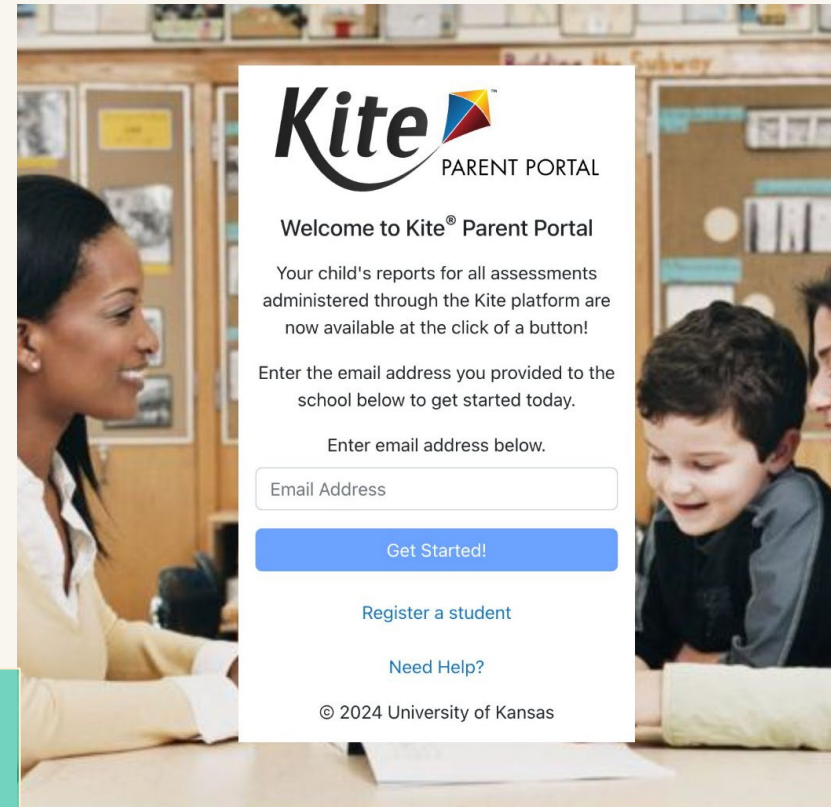
- Reports > General Assessment
  - Individual Student Reports, School Summary, & District Summary
- Reports > Data Extracts > Test Administration and Monitoring
  - KAP Student Scores - Current Students
  - KAP Student Scores - Specified Student
  - KAP Student Scores - Tested Students
  - KAP Summarized Summative Assessment
  - KAP Test Administration Monitoring (Tested Students & SC Codes)

# Parent Portal



- Districts control access
- Upload SSID – Parent Email connections to EP
  - Settings > Parents
- Reports available for all Kite assessments
- See Kite Educator Portal Manual for more info!

**Reminder:** Parent Records will be removed after July 26th. Keep copy of Parents Extract and re-upload after July 26 to ensure uninterrupted access.





# DTC Responsibilities

---



- Changing DTCs for next year?
  - Send an email to [jewing@ksde.org](mailto:jewing@ksde.org)
- Clean up users in Kite Educator Portal.
- Security & Ethics Training – required annually.
  - More information on dates and locations will be available soon.

# What's New for 2024-2025

---



- Summative Assessments
  - New Items
  - New ELA Passages, Science Phenomena
- Interim Assessments
  - Interim 1 & Interim 2 (NOT Fall-Winter-Spring)
- New reports
  - Interactive Reporting

# KAP Mini-Tests

---



- Expanding Next Year
- Science!
- Summer Curriculum Opportunity?
  - View and Print Mini-Tests in Educator Portal
- Feedback appreciated: [kap-support@ku.edu](mailto:kap-support@ku.edu)

# Questions?

Please use the chat feature in Zoom to ask any relevant questions or clarifications.

# KELPA Updates

---



# KELPA

Kansas English Language Proficiency Assessment

# KELPA Screener



- Screener will continue working and you can continue screening students
  - Not available July 21-26, 2024
- Final Check in Educator Portal
  - Assign Screener Students a State Student ID number to retain reports
- Advance Screening for 2024-2025
  - When adding student, select “Screen student for next academic year”
  - Intended for students not yet enrolled, enrolling for 24-25
  - Not retroactive – must be applied before administration

# Questions?

Please use the chat feature in Zoom to ask any relevant questions or clarifications.

# Kite Technology Updates

---



*Kite*  <sup>TM</sup>



# New Kite Student Portal Clients



## Kite Student Portal Security & Technology Upgrades

- Development in progress
- Districts will need to uninstall old and install new SP clients on all devices over the summer for use NEXT year (2024-2025)
- New version: **Kite Student Portal 11.0**
- Once released, Minimum OS versions for 24-25 on the KAP Website update
  - Roles > Technology Coordinators

# Kite Suite Summer Updates

---



- Kite will be **DOWN** on Thursday, July 25 and Friday, July 26 for annual security updates
- Includes all Kite Suite applications – Educator Portal, Student Portal, Parent Portal, and Scoring Portal

# Summer External Review

---



- Summer 2025: Standard Setting
  - Set the standards for proficiency levels on new 24-25 assessments
  - HUGE event involving large numbers of teachers
  - More information coming later

# Kite Service Desk Contact Info

---



- Kite Service Desk

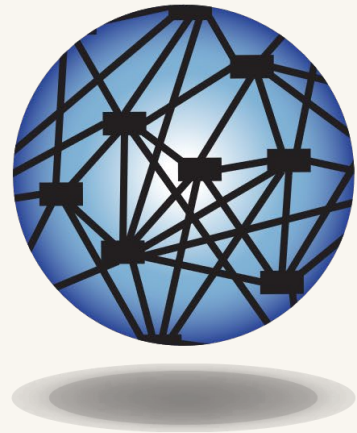
- Hours: Monday – Friday, 7:00 AM – 5:00 PM Central
  - Closed Wednesday, June 19 (Juneteenth Holiday)
  - Closed Thursday, July 4 (Fourth of July Holiday)
- Email: [kap-support@ku.edu](mailto:kap-support@ku.edu)
- Phone: 855-277-9752
- Live Chat ([Educator Portal](#))

# Questions?

Please use the chat feature in Zoom to ask any relevant questions or clarifications.

# DLM Updates

---



**DYNAMIC**<sup>®</sup>  
LEARNING MAPS

# DLM Dates for 2024-2025



Event	Date Open	Date Closed
Required Training	August 6, 2024	April 25, 2025
Fall Test Window	September 9, 2024	December 20, 2024
Spring Test Window	February 3, 2025	April 25, 2025

# 2024-2025 DLM webinars



ALL WEBINARS BEGIN 3:00 P.M. CENTRAL STANDARD TIME

\*\*Content is subject to change at any time due to current events\*\*

August 22, 2024: What do I need to do to get ready for the fall test window?

September 5, 2024: How do I write instructional plans?

October 10, 2024: DLM resources – How do I prepare my students for the DLM?

December 5, 2024: DLM fall test window wrap-up – What needs to be finished by Dec 22?

February 6, 2025: DLM spring window

April 10, 2025: DLM wrap-up – What needs to be finished by April 26?

[Register for entire 2024-25 Webinar Series](#)



# 2022-2023 Reports Temporarily Unavailable



- 2022–2023 district-level reports will be temporarily unavailable in Educator Portal.
  - Aggregate and Bundled Report Files
  - Individual Student Score Reports
- 2022–2023 reports will become available as archived reports beginning June 18th.
  - An Announcement will be posted in Educator Portal.
- 2023-2024 reports will also be available beginning June 18th.

# Download Data Extracts

---



- Now is the time to download any data extracts for the 2023-2024 school year.
- They will no longer be available after mid-July
  - Enrollment extract
  - First contact survey
  - PNP
  - Instructionally embedded monitoring extract
  - And anything else you might want for your records

# Questions?

Please use the chat feature in Zoom to ask any relevant questions or clarifications.

# ACT Information

---



**ACT**<sup>®</sup>

# ACT, WorkKeys, PreACT 8/9 2024-25

---



- When you know if you will have a DTC change, please let me know as soon as you can. I will update those contacts in Pearson Access when they get set for 2024-2025. The DTC can create and/or edit accounts for BTCs and I will be happy to help with that too.
- Watch for announcements from ACT and the KSDE Test Coordinators listserv in early August for timelines and deadlines for all three assessments.

# Dates for ACT 2024-2025



## ACT Window 1 (for grade 11 students)

Paper	February 25, 2025
Online	February 25-28; March 3-7
Accommodations	February 25-28; March 3-7

## Window 2

Paper	April 8, 2025
Online	April 8-11, 14-18
Accommodations	April 8-11, 14-18

## Window 3 (not available for initial selection; designed to be used for make-up testing.)

Paper	April 22, 2025
Online	April 25-28, 28-30; May 1-2
Accommodations	April 25-28, 28-30; May 1-2

# Dates for WorkKeys and PreACT 2024-25



## PreACT 8/9 (for grade 9 students)

Materials order window            September 9 – October 18, 2024

Test Administration                September 30 – November 8, 2024

Answer documents received by November 15

## WorkKeys (for all grade 11 students and for grade 12 students who have not taken WorkKeys on the KSDE contract)

### Fall Window 1

Paper                                  October 2, 2024

Online                                October 2-November 12

Accommodations    October 2-4, 7-11, and 14

### Fall Window 2

Paper                                  October 30, 2024,

Online                                October 4 – November 12

Accommodations    October 30-November 1,  
November 4-8 and 12

### Spring Window 1

February 26, 2025

February 26-April 21

February 26-28, March 3-7, and 10

### Spring Window 2

April 9, 2025

February 26-April 21

April 9-11, 14-18 and 21

# Questions?

Please use the chat feature in Zoom to ask any relevant questions or clarifications.



# Session Wrap Up

---



A PDF of the slides and a recording of this webinar will be posted by Friday on the KAP website's [DTC Virtual Training page](#).

Have a great summer!

# Contact Information

- **Kite Service Desk**

☎ (855) 277-9752

✉ [kap-support@ku.edu](mailto:kap-support@ku.edu)

- **DLM Service Desk**

☎ (855) 277-9751

✉ [d1m-support@ku.edu](mailto:d1m-support@ku.edu)

- **KAP Assessments**

Julie Ewing

☎ (785) 296-2325

✉ [jewing@ksde.org](mailto:jewing@ksde.org)

- **DLM**

Cary Rogers

☎ (785) 296-0916

✉ [crogers@ksde.org](mailto:crogers@ksde.org)

- **ACT**

Lee Jones

☎ (785) 296-7922

✉ [ljones@ksde.org](mailto:ljones@ksde.org)

